



O'NEILL

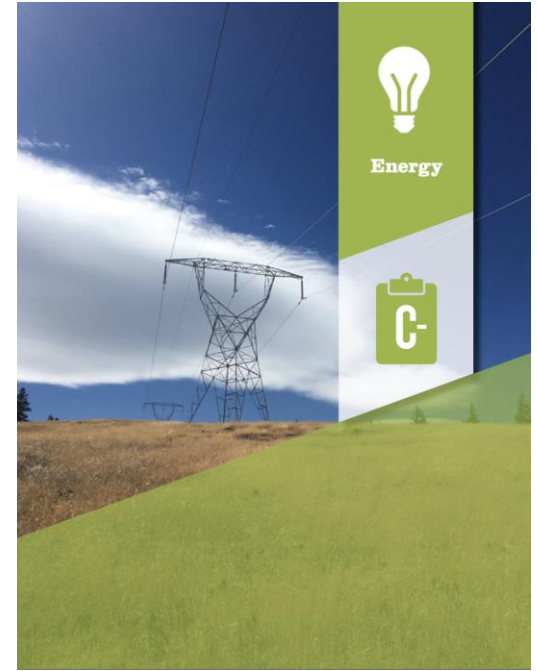
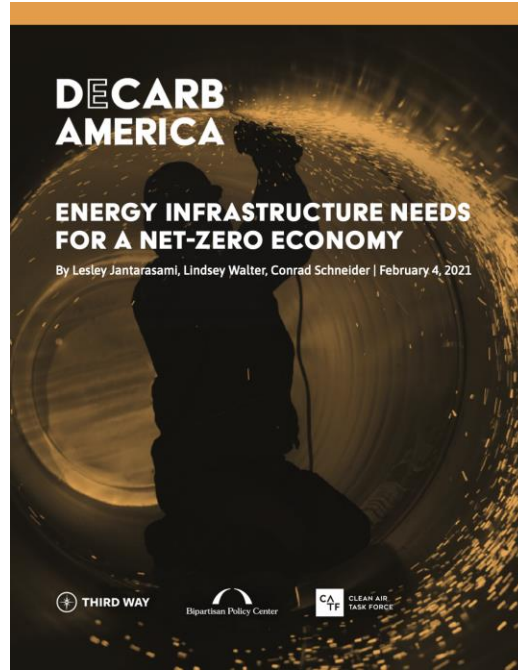
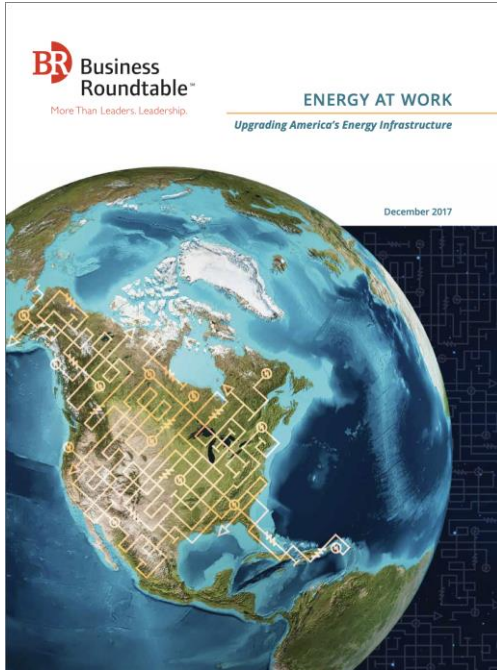
SCHOOL OF PUBLIC AND
ENVIRONMENTAL AFFAIRS

Public Acceptance and Governance in Energy Policy

David Konisky, Professor

December 16, 2021

Energy infrastructure needs are enormous.



But, what about support for building actual projects?

CleanTechnica

CLEAN POWER

Renewable Energy, NIMBY, & Politics Collide In Indiana

Renewable energy interests in Indiana hope to get a boost from a new state law that transfers the permitting process to the state instead of local counties. But the plan is running into determined opposition.



By [Steve Hanley](#) Published April 5, 2021



8 Comments

Bloomberg Green

NIMBYs Shoot Down Green Projects Next Door While Planet Burns

Neighbors worry about protecting pristine vistas and property values when solar and wind projects come to town.

By [David R Baker](#) and [Millicent Dent](#)

September 17, 2019, 6:00 AM EDT

From [Climate Changed](#)

People love renewable power projects. Just not the one next door.



But, what about support for building actual projects?



[\(Mickey DeRham\)](#)



[\(Associated Press\)](#)



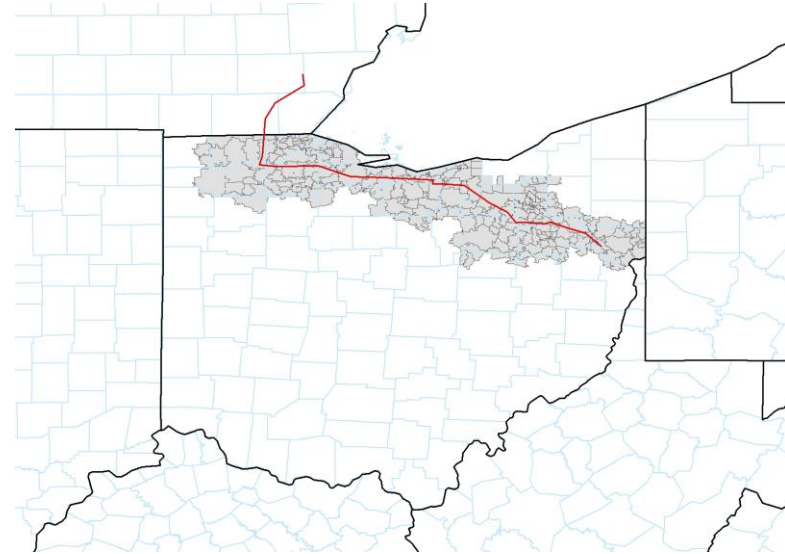
What is NIMBYism, and is it prevalent across energy projects?

- NIMBY is the idea that someone supports use of a technology or land use in general, but is opposed to its specific use when it is near their home.
 - For example, “I support more wind energy, but I don’t want this proposed wind farm in my town.”
- Our research questions:
 - Are NIMBY attitudes common?
 - Are there differences across energy infrastructure types?
 - If not NIMBY, what explains support/opposition for projects?



Our research design

- Measure **both** general support for energy and support for specific projects.
- Six state surveys (California, Florida, New York, Ohio, Texas, and Pennsylvania), with oversampling around fourteen projects.
- Sample size: $n = 16,200$ (about 2,800 per state); administered simultaneously in October 2017.



An example: Nexus natural gas pipeline.

Our research design

Table 1. Energy infrastructure project information

Project	Type	Location	State sample	Local vicinity sample
Pipelines and LNG terminal				
Pilgrim	Oil pipeline	Eastern NY	1,848	325
Atlantic Sunrise	Natural gas pipeline	Central PA	1,761	443
Nexus	Natural gas pipeline	Northern OH	1,574	582
Penn East	Natural gas pipeline	North Central PA	1,761	375
Eagle LNG	Liquefied natural gas terminal	Jacksonville, FL	1,860	315
Power plants				
AES Alamitos	Natural gas power plant	Long Beach, CA	1,331	715
Chocolate Bayou	Wind farm	Brazoria County, TX	1,981	305
Enerlogics Brooklyn	Solar farm	Cleveland, OH	1,574	444
San Vicente	Hydro power plant	San Diego County, CA	1,331	473
Turkey Point 6&7	Nuclear power plant	Homestead, FL	1,860	425
Electricity transmission lines				
Project Compass	Transmission line	Southern NY/Central PA	1,848/1,761	325
Colusa Sutter	Transmission line	Northern CA	1,331	381
Champlain Hudson	Transmission line	Central NY	1,848	423
Leander Round Rock	Distribution line	Williamson County, TX	1,981	314



Main findings

- Almost no evidence of NIMBYism.
- Why no NIMBY?
 - People in close proximity and further away view project costs and benefits similarly.
- What are the important determinants of project support:
 - Perceptions of local environmental quality
 - Trust in energy companies
 - Concern about climate change



Related publications

David M. Konisky, Stephen Ansolabehere, and Sanya Carley, 2020, "[Proximity, NIMBYism, and Public Support for Energy Infrastructure](#)," *Public Opinion Quarterly* 84(2): 391-418.

Sanya Carley, David M. Konisky, Zoya Atiq, and Nick Land, 2020, "[Energy Infrastructure, NIMBYism, and Public Opinion: A Systematic Literature Review of Three Decades of Empirical Survey Literature](#)," *Environmental Research Letters*, 15(9).

Parrish Bergquist, Steve Ansolabehere, and Sanya Carley, David Konisky, 2020, "[Backyard Voices: How Sense of Place Shapes Views of Large-Scale Energy Transmission Infrastructure](#)," *Energy Research & Social Science* 63, 101396.

Sanya Carley, Stephen Ansolabehere, and David M. Konisky, 2019, "[Are all Electrons the Same? Evaluating Support for Local Transmission Lines through a Survey Experiment](#)," *PLOS ONE*.



Thank You!



INDIANA UNIVERSITY

1820-2020