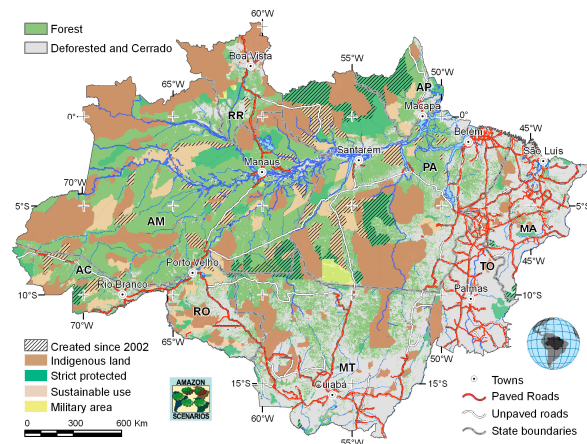


## Brazil national and state REDD: executive summary

Brazil has become the first major developing country emitter of greenhouse gas pollution to commit to reduce its national emissions, after President Luiz Inácio Lula da Silva announced Brazil's target to reduce emissions from deforestation 80% below the 1996 – 2006 average by 2020. Behind this bold commitment is the record of Brazil's Action Plan for the Prevention and Control of Amazon Deforestation (PPCDAM), which contributed to a 64% reduction of national deforestation between 2004 – 2009. Deforestation for 2009 is likely to be the lowest on record since Brazil began measuring in the 1980s. Among the Plan's accomplishments are:

- 640,000 km<sup>2</sup> of new protected areas (indigenous territories, parks, sustainable use areas), the size of France, blocking frontier expansion created from 2003 – 2008 (Figure 1).
- Increased law enforcement in the frontier zone, with joint Federal Police, Armed Forces and Environmental Agency operations jailing over 700 people, including government employees, for illegal land use practices
- Government agriculture credit cut off to 36 highest-deforestation municipalities in 2008 to address upturn in deforestation and penalties established for buyers of beef and soy from illegal deforestation.



**Figure 1. Amazon protected areas prior to and following PPCDAM**

### Following the deforestation action plan

On the basis of these achievements, the Government of Norway has committed \$1 billion over the next decade if Brazil meets its targets.

### Amazon states in the forefront

In June 2008, the governors of the nine Amazon states sent a letter to President Lula supporting zero deforestation and calling on the President to change Brazil's position in the UN climate negotiations to support carbon market credit for REDD. Five Amazon states are working with California, Wisconsin and Illinois, and Papua and Aceh, Indonesia, in the Governor's Climate and Forest Task Force to develop standards for compliance grade REDD for U.S. states.

### For more information, please contact:

sschwartzman@edf.org | international@edf.org | +1-202-387-3500